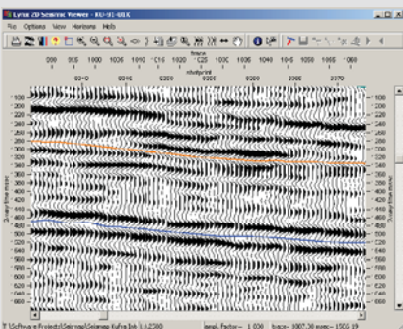


# Lynx Seismap for ArcGIS

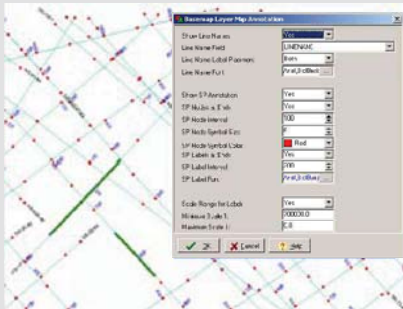
## Integrate your interpretation

Lynx software for ESRI ArcGIS Desktop

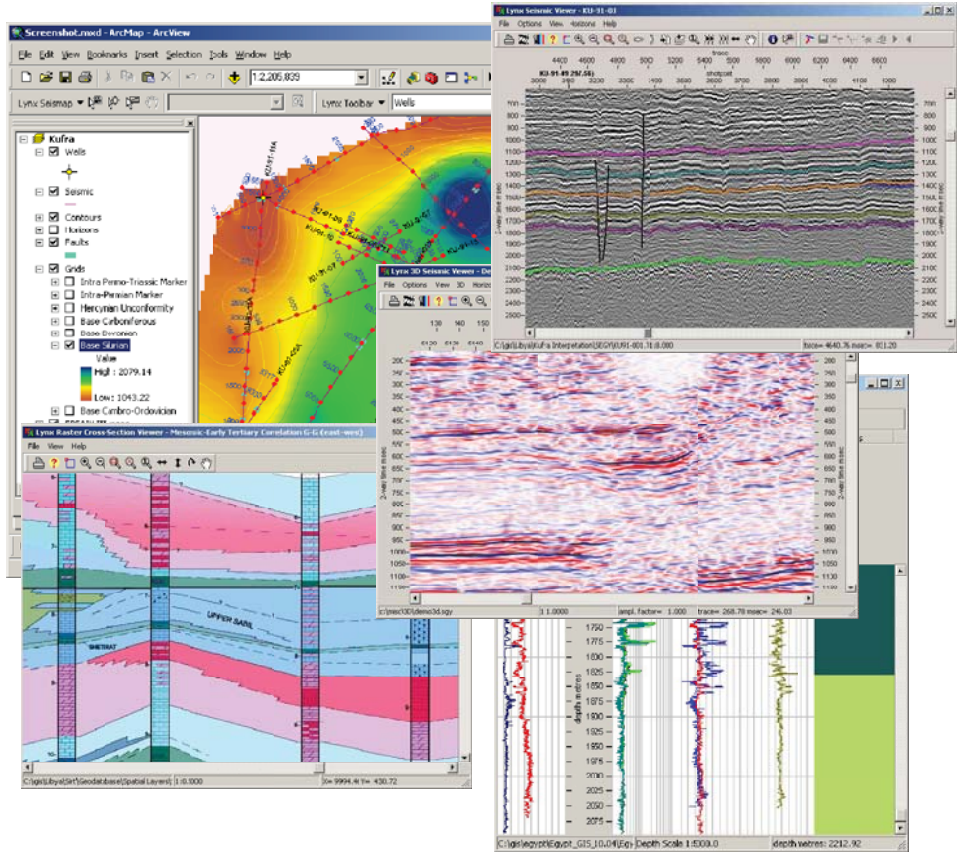
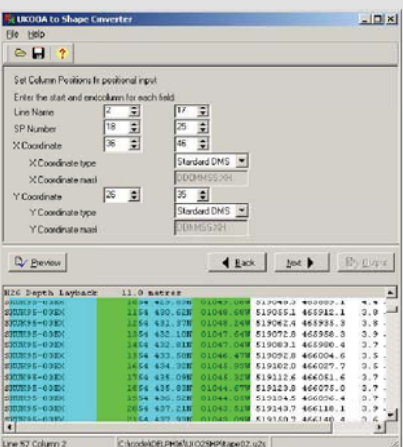
Overlay horizons and surfaces on your seismic data



Shotpoint-specific options for seismic basemap display



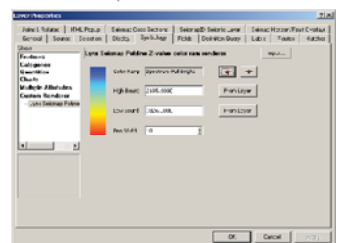
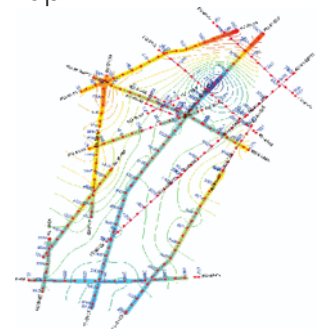
Import seismic locations from UKOOA, SEG-P1 and CSV formats to polyline-M features



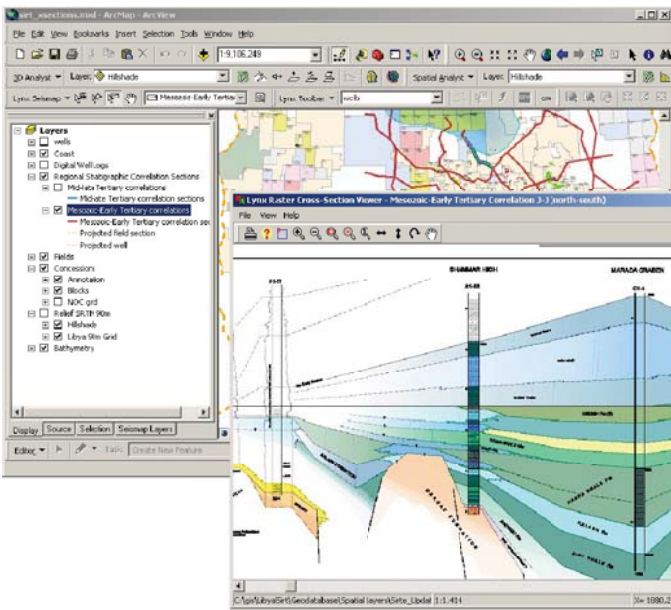
The Lynx Seismap extension for ESRI ArcGIS Desktop provides integrated seismic, well log and cross-section viewers for ESRI ArcMap, plus import and export of industry-standard formats such as SEG-Y, UKOOA/SEG-P1, LIS, LAS and ZMap.

### Key Features

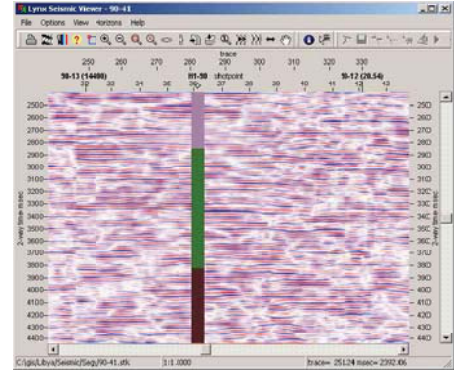
- Cross-section viewer - link TIFF and JPEG images to polylines for scrolling, zooming and panning
- Well log (LIS, LAS, LIS-TIF) curve display and plot
- Seismic (SEG-Y) 2D and 3D (inline and crossline) display and plot
- Import/export UKOOA/SEG-P1 files
- Seismic basemap labelling options
- Horizon and fault polyline and surface overlays on seismic profiles, import and export
- Z-Map grid import and export
- Horizon polyline Z-value display by colour ramp
- Formation tops column display with wireline data



Requires ESRI ArcGIS Desktop V9.x on Microsoft Windows

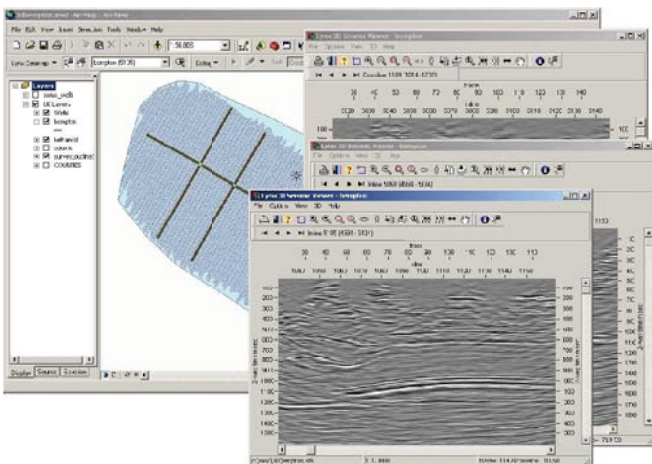
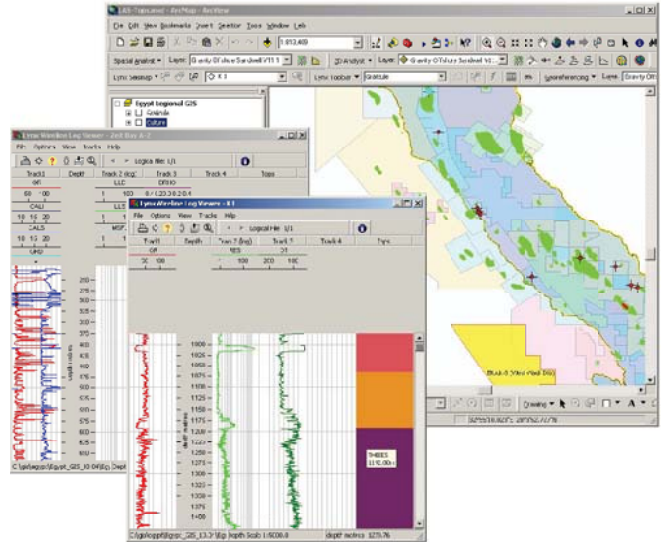
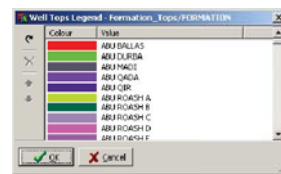
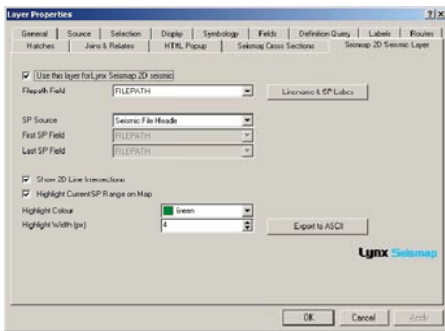


Cross-section viewer - use the Seismap pan tool to grab the current highlighted range and scroll the scroll the cross-section window



Wireline well curves displayed with formation tops from a related table

Integrated layer properties for seismic 2D and 3D, well and cross-section layers.



3D seismic inlines and crosslines displayed from a single 3D SEG-Y file.

Industry-standard formats used - no need for reformatting

Contact us for licensing and pricing information



**Lynx Information Systems Ltd**  
93-99 Upper Richmond Road  
Putney, London  
SW15 2TG  
United Kingdom

Phone: +44 (0)20 8780 2634  
Email: lynx@lynxinfo.co.uk  
Web: www.lynxinfo.co.uk

**Lynx Information Systems Inc.**  
16420 Park Ten Place  
Suite 150  
Houston, Texas 77084  
United States of America

Phone: 281 599 7226  
Email: lynx@lynx-info.com  
Web: www.lynx-info.com